



# SAILING INSTRUCTIONS

19th Sint Maarten Budget Marine

Optimist Championship

Sint Maarten Yacht Club

November 28th - December 1st 2024

**BUDGET  
MARINE**



The notation [NP] in a rule means that a boat cannot protest (No protest) against another boat when infringing this rule. This changes RRS 60.1(a).

The notation [DP] in a rule means that the penalty for a breach of that rule may, at the discretion of the protest committee, be less than disqualification.

1.	<b>RULES</b>
----	--------------

- 1.1 The event is governed by the rules as defined in The Racing Rules of Sailing 2021 - 2024.
- 1.2 Appendix T will apply.
- 1.3 The IODA class rules will apply: [IODA CLASS RULES](#).
- 1.4 If there is a conflict between languages the English text takes precedence.

2.	<b>CHANGES TO THE SAILING INSTRUCTIONS</b>
----	--

Any change to the sailing instructions will be posted 1 hour before the first warning signal of the day, except that any change to the schedule of races will be posted by 20:00 on the day before it will take effect.

3.	<b>COMMUNICATION WITH COMPETITORS AND SUPPORT BOATS</b>
----	---

- 3.1 Notices will be posted on the Official Notice Board (ONB) located at the SMYC bar and restaurant.
- 3.2 [DP] [NP] Except in an emergency, a boat racing shall not make voice or data transmissions and shall not receive voice or data communication that is not available to all boats.
- 3.3 Communications on the water may be made by the race committee on VHF channel 72.

4.	<b>CODE OF CONDUCT</b>
----	------------------------

- 4.1 [DP] [NP] Competitors and support persons shall comply with reasonable requests from race officials.
- 4.2 [DP] [NP] Competitors and support persons shall handle any equipment or place advertising provided by the organizing authority with care, seamanship, in accordance with any instructions for its use and without interfering with its functionality.

5.	<b>SIGNALS MADE ASHORE</b>
----	----------------------------

- 5.1 Signals made ashore will be displayed on the flag pole located at the SMYC dock.

- 5.2 When flag AP is displayed ashore, « 1 minute » is replaced with « not less than 30 minutes » in Race Signals AP.
- 5.3 [DP] Flag D with one sound means Boats shall not leave the shore until this signal is made. The warning signal will not be made before the scheduled time or less than 30 minutes after flag D is displayed.
- 5.4 [DP] When flags AP over H or N over H are displayed from a race committee vessel, all boats in that race area shall immediately return ashore and shall wait there for further signals. (This changes Race Signals AP over H and N over H.)

<b>6.</b>	<b>SCHEDULE</b>
-----------	-----------------

6.1 Schedule ashore. This amends 7.1 of the Notice of Race.

<u>DATE</u>	<u>TIME</u>	<u>WHERE</u>	<u>WHAT</u>
Thu, Nov, 28	9:00AM - 2:00PM	SMYC OFFICE	Registration and boat allocation
	3:30PM	SIMPSON BAY	Practice Race warning signal
	5:00PM	SB BRIDGE	Opening Ceremony
	6:00PM	SMYC Dock	Welcome Dinner
Fri, Nov, 29	7:30AM	SMYC Dock	Light breakfast
	8:00AM	SMYC Dock	Sailors briefing
	9:00AM	SB BRIDGE	Outbound Bridge Opening
Sat, Nov, 30	7:30AM	SMYC Dock	Light breakfast
	8:00AM	SMYC Dock	Sailors briefing
	9:00AM	SB BRIDGE	Outbound Bridge Opening
Sun, Dec, 1	7:30AM	SMYC Dock	Light breakfast
	8:00AM	SMYC Dock	Sailors briefing
	9:00AM	SB BRIDGE	Outbound Bridge Opening



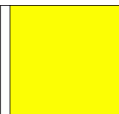
6.2 Racing Schedule. This amends 7.1 of the Notice of Race.

<u>DATE</u>	<u>1st Warning Signal</u>
Thu, Nov 28	3:30PM (Practice Race)
Fri, Sat, Sun, Nov 29, 30, Dec 1.	9:30AM

- 6.3 To alert boats that a race or sequence of races will begin soon, the orange starting line flag will be displayed with one sound at least five minutes before a warning signal is made.
- 6.4 A maximum of 15 races can be sailed during the event.
- 6.5 On the last scheduled day of racing no warning signal will be made after 12:00PM

<b>7.</b>	<b>EVENT FLAGS</b>
-----------	--------------------

7.1

<u>FLEETS</u>	<u>CLASS FLAGS</u>	<u>ADDITIONAL INFORMATION</u>
<b>OPTIMIST</b>		Some Fleets may start together, but will be scored in separate fleets.
<b>OPTIMIST BENJAMIN</b>		
<b>OPTIMIST GREEN</b>		

7.2 On the last scheduled day of racing no warning signal will be made after 12:00 PM.

<b>8.</b>	<b>RACING AREA</b>
-----------	--------------------

8.1 SI Addendum 1 - RACING AREA shows the location of the racing area.

<b>9.</b>	<b>COURSES</b>
-----------	----------------

9.1 SI Addendum 2 - COURSES shows the courses, including the approximate angles between legs, the order in which marks are to be passed, and the side on which each mark is to be left.

<b>10.</b>	<b>MARKS</b>
------------	--------------

10.1 The marks used for the course will be white or red inflatable buoys with the Budget Marine logo.

<b>11.</b>	<b>OBSTRUCTIONS</b>
------------	---------------------

11.1 No obstructions

<b>12.</b>	<b>THE START</b>
------------	------------------

12.1 The starting line will be between a staff displaying an orange flag on the race committee boat and an orange flag or orange buoy.

12.2 Races will be started using RRS 26.

Minutes before starting signal	Visual signal displayed	Visual signal removed	Sound signal	Meaning
10	Orange flag		1	Race will start soon
5	Class flag		1	Warning signal
4	P, U or BLACK		1	Preparatory signal
1		P, U or BLACK	1 LONG	Last minute
0		Class flag	1	Start

12.3 [DP] [NP] Boats whose warning signal has not been made shall avoid the starting area during the starting sequence for other races.

12.4 A boat that does not start within 4 minutes after her starting signal will be scored Did Not Start without a hearing. This changes RRS A5.1 and A5.2.

<b>13.</b>	<b>CHANGE OF THE NEXT LEG OF THE COURSE</b>
------------	---

13.1 To change the next leg of the course, the race committee will

- 13.1.1 Lay a new top mark
- 13.1.2 Move the finishing line
- 13.1.3 Move the leeward gate.

13.2 When a temporary new mark is laid, the original mark will be moved as soon as possible. When in a subsequent change a new mark is replaced, it will be replaced by the original mark.

13.3 Courses can be shortened using the “S” flag (RRS 32) but never before the gate.

<b>14.</b>	<b>THE FINISH</b>
------------	-------------------

14.1 The finish line will be between a staff displaying a blue flag on the race committee boat and a blue flag, or white budget buoy.

14.2 A White flag displayed over a class flag with two sounds means that any boat in that class still racing will be scored in the position that they currently hold without completing the course or finishing. They can sail directly back to the start area to prepare for the next start. This changes Rule 28 and Appendix A4

<b>15.</b>	<b>PENALTY SYSTEM</b>
------------	-----------------------

15.1 For the Optimist & Optimist Benjamin Classes RRS 44.1 is used.

15.2 For the Optimist Green Class RRS 44.1 is changed so that the Two-Turns penalty is replaced by One-Turn penalty.

15.3 For the Optimist & Optimist Benjamin Classes appendix P applies.

<b>16.</b>	<b>TIME LIMITS AND TARGET TIMES</b>
------------	-------------------------------------

16.1

<b>Classes</b>	<b>Target time</b>	<b>Race time limit</b>	<b>Mark 1 time limit</b>	<b>Finish window</b>
Optimist & Optimist Benjamin	30 Minutes	60 Minutes	20 Minutes	10 Minutes
Optimist Green	20 Minutes	45 Minutes	20 Minutes	10 Minutes

16.2 If no boat has passed the first mark within the Mark 1 Time Limit, the race will be abandoned.

16.3 Failure to meet the target time will not be grounds for redress. This changes RRS 62.1(a).

16.4 The Finishing Window is the time for boats to finish after the first boat sails the course and finishes. Boats failing to finish within the Finishing Window, and not subsequently retiring, penalized or given redress, will be scored Time Limit Expired (TLE) and be scored points equal to the number of boats finishing within the time limit plus two points.

<b>17.</b>	<b>HEARING REQUESTS</b>
------------	-------------------------

17.1 The protest time limit for each event is 60 minutes after either:

17.1.1 The last boat in the fleet has finished the last race of the day, or

17.1.2 The race committee signals no more racing today for the Event, whichever is later.

17.2 A request for redress based on an incident identified in a scoring enquiry will meet the time limit if:

17.2.1 The scoring enquiry was submitted within the time limit specified in RRS 62.2 as changed by Sailing Instruction 17.1; and

17.2.2 The request for redress is delivered as soon as reasonably possible after being notified of the race committee's response to the scoring enquiry. The response by the race committee may be notified in writing or through the online system. This changes RRS 62.2.

17.3 Hearing request forms are available at the SMYC Office.

17.4 Notices will be posted no later than 30 minutes after the protest time limit to inform competitors of hearings in which they are parties or named as witnesses. Hearings will be held in the protest room, located at the SMYC Office, beginning at the time posted.

17.5 A list of boats that have been penalized for breaking RRS 42 under Appendix P will be posted on the online official notice board.

<b>18.</b>	<b>SCORING</b>
------------	----------------

18.1 3 races are required to be completed to constitute a series.

- 18.2 a) When fewer than 5 races have been completed, a boat's series score will be the total of her race scores.
- b) When from 5 to 9 races have been completed, a boat's series score will be the total of her race scores excluding her worst score.
- c) When 10 or more races have been completed, a boat's series score will be the total of her race scores excluding her two worst scores.
- 18.3 Rule A5.3 applies.

<b>19.</b>	<b>SAFETY REGULATIONS</b>
------------	---------------------------

- 19.1 [DP] [NP] Each time you go out and return ashore, including during a return to shore indicated by an "H" flag, a sign-in will be set up for each class allowed to race.
- This sign-in is mandatory for all competitors, both when leaving for the water and upon returning to shore.
  - The sign-out will be open 1 hour before the scheduled bridge opening of the day.
  - Competitors who have not signed out at the start of a race or group of races without returning to shore will be considered as Did Not Start (DNS) in the first race of the day without instructions.
  - Competitors who have not signed in upon returning to shore from a race or group of races without returning to shore will be considered as Did Not Start (DNS) in the last race of the day without instructions.
  - Competitors who have not signed in at both the start and return ashore of a group of races without returning to shore will be considered as Did Not Course (DNC) for all the races of the day without instructions.
- Deadlines for signing:  
 At the start: the time of the first warning signal of the first race.  
 Upon returning ashore: the deadline for filing protests, after the last race of the day.
- 19.2 [DP] A boat that retires from a race shall notify the race committee at the first reasonable opportunity.
- 19.3 When flag V is displayed on the committee boat, support boats are to collaborate with the race committee in the safety measures on the water until flag V is removed.
- 19.4 The VHF channel will be: 72.

<b>20.</b>	<b>REPLACEMENT OF THE CREW OR EQUIPMENT</b>
------------	---

- 20.1 [DP] Substitution of competitors is not allowed without prior written approval of the technical committee.
- 20.2 [DP] A boat that retires from a race shall notify the race committee at the first reasonable opportunity.

21.	<b>EQUIPMENT AND MEASUREMENT CHECKS</b>
-----	---

- 21.1 A boat or equipment may be inspected at any time for compliance with the class rules, notice of race and sailing instructions.
- 21.2 [DP] When instructed by a race official on the water, a boat shall proceed to a designated area for inspection.

22.	<b>OFFICIAL VESSELS</b>
-----	-------------------------

- 22.1 Official vessels will be identified as follows:  
Race Committee: RC FLAG  
Jury: YELLOW FLAG

23.	<b>SUPPORT TEAM</b>
-----	---------------------

- 23.1 [DP] [NP] Team leaders, coaches and other support persons shall stay outside areas where boats are racing from the time of the preparatory signal for the first start until all boats have finished or retired or the race committee signals a postponement, general recall or abandonment.
- 23.2 [DP] [NP] Support boats shall have on board:
- Life jackets (mini 50N) always worn by all persons on board
  - VHF radio
  - A knife
  - An anchor and a suitable mooring line
  - A floating towing line 10mm in diameter and 15m long
  - A kill cord which shall be connected to the pilot while the engine is running.
- Support boat pilots shall comply with all requests from the officers or representatives of the organizing authority, particularly those concerning assistance.
- Support boats shall comply with local sailing regulations, in particular speed limits in the various zones.

24.	<b>TRASH DISPOSAL</b>
-----	-----------------------

- 24.1 Trash may be placed aboard on all official or support person vessels.

25.	<b>BERTHING</b>
-----	-----------------

- 25.1 [DP] Boats shall be kept in their assigned places while in the boat park

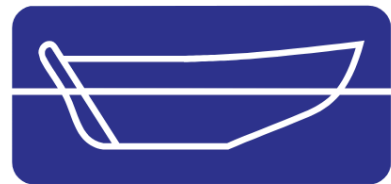
26.	<b>Prizes</b>
-----	---------------

- 26.1 Prizes will be given to the 1st, 2nd and 3rd place finisher in each class.

RACE OFFICIALS APPOINTED:

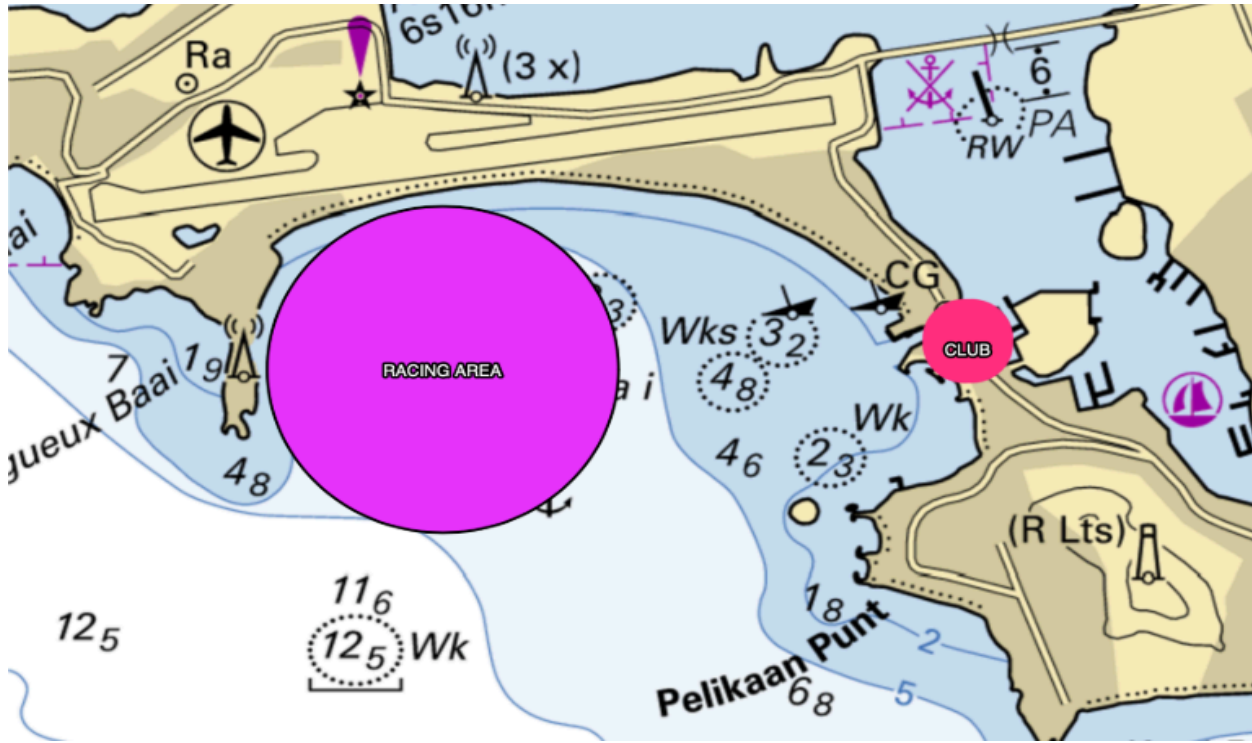
<u>ROLE</u>	<u>NAME</u>	<u>QUALIFICATION</u>	<u>NATIONALITY</u>
Chairman of the Jury	Iain MOBBS	CJ	GBR
Members of the Jury	Steven KURN	NJ	BAR
	Jolyon FERRON	CJ	SXM
	David de Vries	-	-
Course Race Officer	Mathieu MAUDET	NRO	FRA
Deputy Race & Results Officer	Elja VAN DER HORST	CRO	NLD

**BUDGET  
MARINE**





Addendum - 1 : RACING AREA



**COURSES** SINT MAARTEN BUDGET MARINE  
OPTIMIST CHAMPIONSHIP 2024

OX1 START > 1 > 2 > 3P > FINISH  
OX2 START > 1 > 2 > 3S/3P > 2 > 3P > FINISH  
OX3 START > 1 > 2 > 3S/3P > 2 > 3S/3P > 2 > 3P > FINISH

**1**  
**2**  
**3s** **3p**  
START FINISH

**COURSES** SINT MAARTEN BUDGET MARINE  
OPTIMIST CHAMPIONSHIP 2024

LR1 START > 1 > 2S/2P > 2P > FINISH  
LR2 START > 1 > 2S/2P > 1 > 2P > FINISH  
LR3 START > 1 > 2S/2P > 1 > 2S/2P > 1 > 2P > FINISH

1

2s 2p

START FINISH

**BUDGET MARINE**

